

ALUTECH CARES



Eco-friendly and energy-efficient full-cycle production facilities (foundry shop, extrusion, coating and anodizing lines) allow us to make our products in the most sustainable way possible.

We aim to minimise unnecessary consumption of raw materials, energy and environmental impact.



Aluminium is one of the most sustainable materials on our planet

ENVIRONMENTAL COMMITMENT

ALUTECH aluminium profiles with anodic oxide coating have reached **Cradle to Cradle Certified®** Silver level.



It is a registered trademark of Cradle to Cradle Products Innovation Institute that confirms sustainability of the product life cycle.

Environmental Product Declaration (EPD) received for ALUTECH systems signals ALUTECH commitment to measure and reduce the environmental impact of its products and services.

ALUTECH EPD declarations confirm comparable, objective and third-party verified data that shows the environmental performance of the products and services.



ALUTECH is an innovative company that designs and manufactures aluminium systems for architecture and construction (windows and doors, facade, interior, fire resistant and sun protection systems).

In-house engineering centre, eco-friendly full-cycle production (from smelting of primary aluminium to profile coating) as well as UK-based showroom and warehouse ensure steady and dynamic development of ALUTECH Group.

ALUTECH COMMERCIAL UK
Knights House 2 Parade, Sutton Coldfield,
B72 1PD, United Kingdom
ukcommercial@alutech-group.com
+44 (0) 7436 336948
+44 (0) 121 824 4788

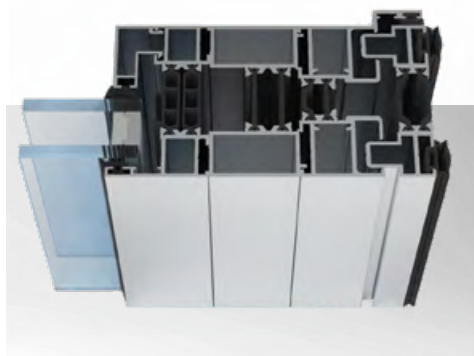
WWW.ALUTECH-GROUP.COM



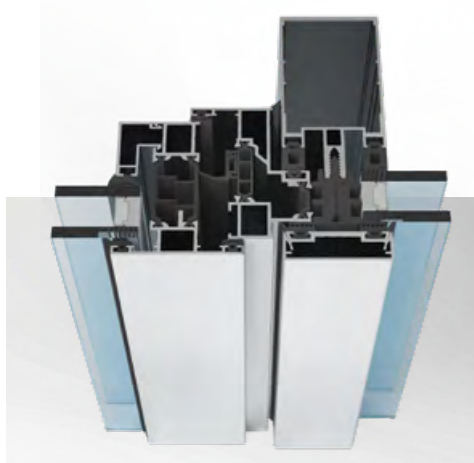
ALT W73 CW

ELEGANT ULTRA SLIMLINE CASEMENT WINDOWS

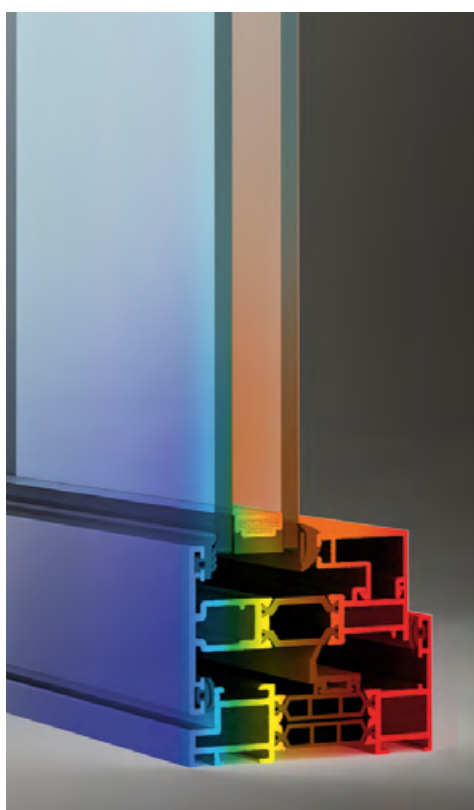
WWW.ALUTECH-GROUP.COM



ALT BF73 bi-folding door integration



ALT F50 curtain walling integration



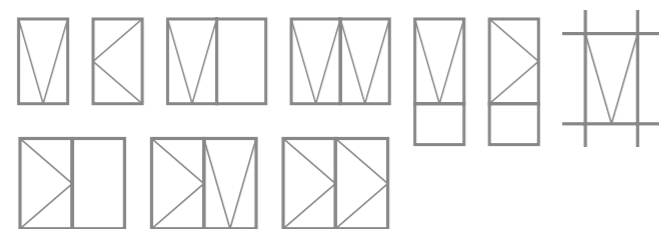
U_w down to $1.1 \text{ W/m}^2 \cdot \text{K}$

TECHNICAL CHARACTERISTICS

Dimensions

Max sash height	2200 mm
Max sash width	1750 mm
Max sash weight	180 kg
Glazing thickness	28–48 mm
Types of glazing	from inside and outside

Window opening types



Comfort

Air permeability	class 4 (600 Pa)
Water tightness	
side hung	class E1350 (1 350 Pa)
top hung	class E1500 (1 500 Pa)
Wind load resistance	
side hung	class C5 (2 000 Pa; 1/300)
top hung	class C3 (1 200 Pa; 1/300)
Burglar resistance	PAS 24:2016 (class W)

Energy

Triple glazed window*	$U_w = 1.1 \text{ W/m}^2 \cdot \text{K}$ WER of 'A+' rating
Double glazed window**	$U_w = 1.6 \text{ W/m}^2 \cdot \text{K}$ WER of 'B' rating

*For $1.48 \times 1.23 \text{ m}$ window dimensions with $U_g = 0.5 \text{ W/(m}^2 \cdot \text{K)}$

**For $1.48 \times 1.23 \text{ m}$ window dimensions with $U_g = 1.1 \text{ W/(m}^2 \cdot \text{K)}$

≥ 20	A ++
> 10 to 20	A +
0 to < 10	A
-10 to < 0	B
-20 to < -10	C
-30 to < -20	D
-50 to < -30	E

BFRC Rating
kWh/($\text{m}^2 \cdot \text{yr}$)



ALT W73 CW

ULTRA SLIMLINE CASEMENT WINDOWS

Combining the refined look of aluminium and the latest thermal and security performance will make your home safe and full of daylight.



WARM AND SEALED

- Unique optimized profile design for better thermal insulation;
- Outstanding tightness performance;
- BFRC rated ('A+' for triple glazed window).

SAFETY

- PAS24 certified;
- Advanced security with special glass fixing clip;
- World leading hardware suppliers.

STYLISH AND INDIVIDUAL

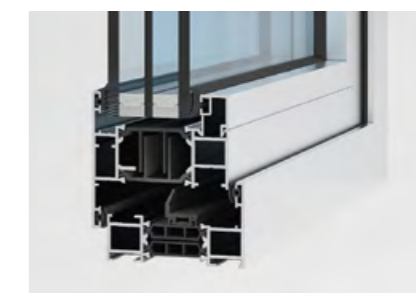
- Variety of design options;
- Different surface treatment types for anodizing (bead blasting / brushing / polishing);
- Wide range of RAL colours available as well as any other special powder request.

OPTIONS

- Internal / external beading option available;
- Flush / stepped design options for all window configurations.
- Hardware kits from leading UK hardware producers.



Ultra slim sash



Standard sash



Slim sash. External beading

COATING OPTIONS

High quality of powder and anodic coatings of ALUTECH products is confirmed by Qualicoat/Seasice and Qualanod international quality certificates.

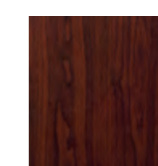


POWDER COATING

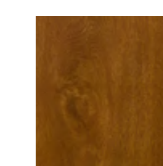
> 200 colours according to RAL colour chart;
> 50 standard colours without extra surcharge including **market leading RAL7038 matt**.



WOOD GRAIN EFFECT



Cherry



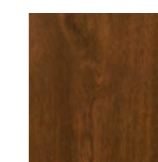
Golden oak



Irish oak



White ash



Walnut

ANODIZING

3 types of surface treatment:
• Bead blasting;
• Brushing;
• Polishing.

9 anodized colour tones:
• Silver;
• Bronze (2 options);
• Black;
• Champagne;
• Cognac;
• Gold (3 options).

