

# ALUTECH CARES

Eco-friendly and energy-efficient full-cycle production facilities (foundry shop, extrusion, coating and anodizing lines) allow us to make our products in the most sustainable way possible.

We aim to minimise unnecessary consumption of raw materials, energy and environmental impact.



Aluminium is one of the most sustainable materials on our planet

## ENVIRONMENTAL COMMITMENT

ALUTECH aluminium profiles with anodic oxide coating have reached **Cradle to Cradle Certified®** Silver level.



It is a registered trademark of Cradle to Cradle Products Innovation Institute that confirms sustainability of the product life cycle.

**Environmental Product Declaration (EPD)** received for ALUTECH systems signals ALUTECH commitment to measure and reduce the environmental impact of its products and services.

ALUTECH EPD declarations confirm comparable, objective and third-party verified data that shows the environmental performance of the products and services.



ALUTECH is an innovative company that designs and manufactures aluminium systems for architecture and construction (windows and doors, facade, interior, fire resistant and sun protection systems).

In-house engineering centre, eco-friendly full-cycle production (from smelting of primary aluminium to profile coating) as well as UK-based showroom and warehouse ensure steady and dynamic development of ALUTECH Group.

**ALUTECH COMMERCIAL UK**  
Knights House 2 Parade, Sutton Coldfield,  
B72 1PD, United Kingdom  
ukcommercial@alutech-group.com  
+44 (0) 7436 336948  
+44 (0) 121 824 4788

[WWW.ALUTECH-GROUP.COM](http://WWW.ALUTECH-GROUP.COM)



# ALT SL130

## SLIDING / LIFT AND SLIDE PATIO DOORS

[WWW.ALUTECH-GROUP.COM](http://WWW.ALUTECH-GROUP.COM)



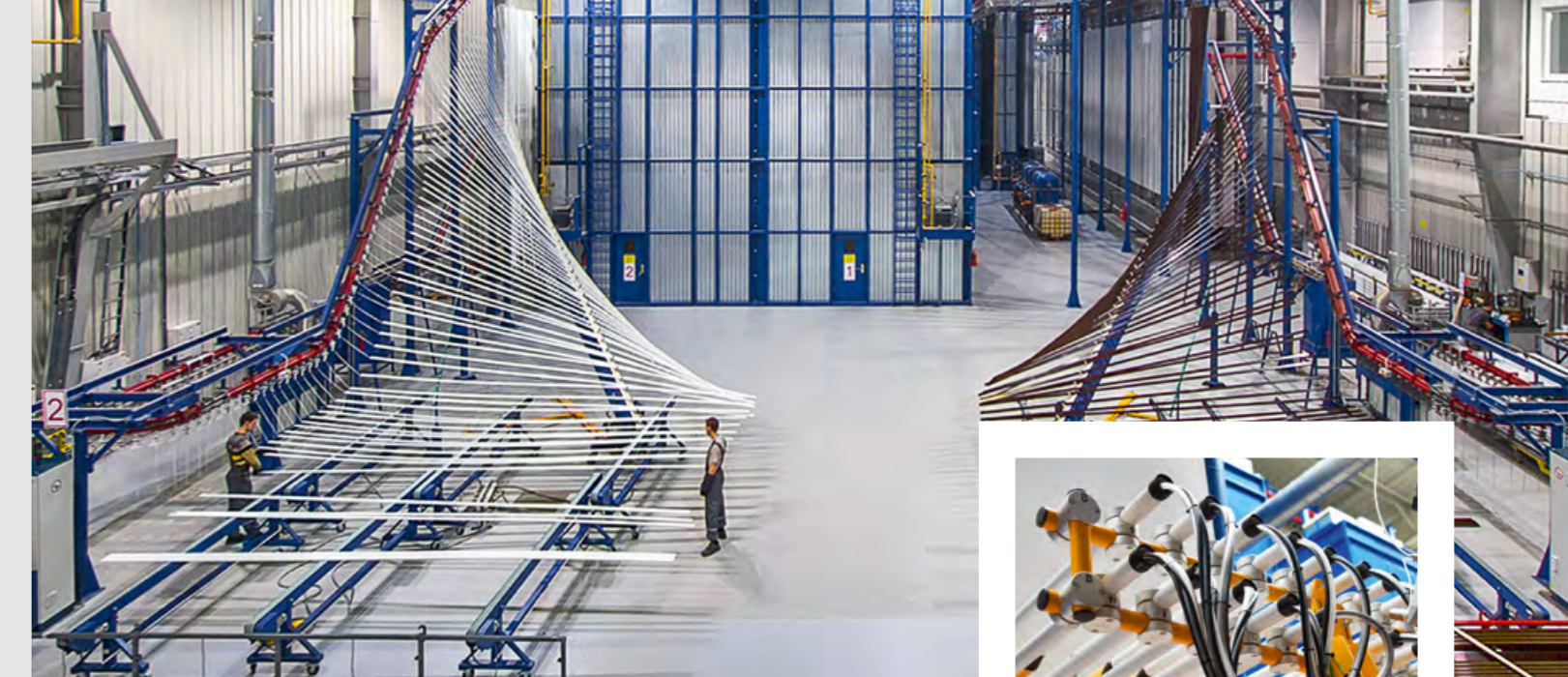


# ALT SL130

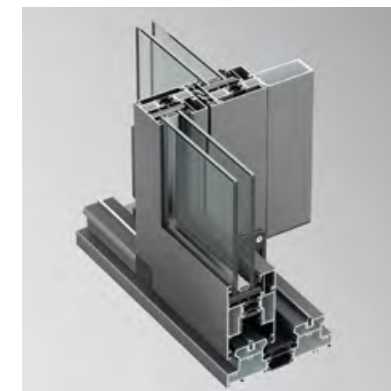
## SLIMLINE LIFT & SLIDE AND SLIDING DOORS

A stylish functional solution for private and commercial facilities. ALT SL130 Slimline patio system will enrich the premises with natural light, give an excellent view of the surrounding landscapes, provide seemingly endless transparent surfaces.

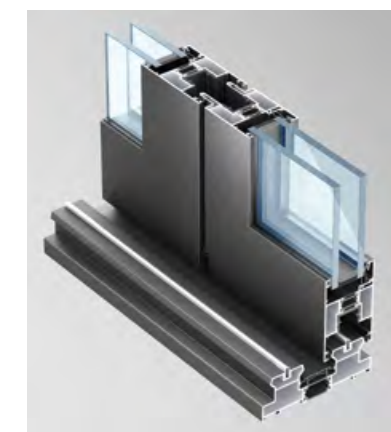
Availability of automatic control option makes the daily door operation even more comfortable.



ALT SL130 system gives architects and designers a wide range of design solutions for large openings.



Reinforced Interlock option



Single-, Double-, Triple Track options

### TECHNICAL CHARACTERISTICS

#### Dimensions

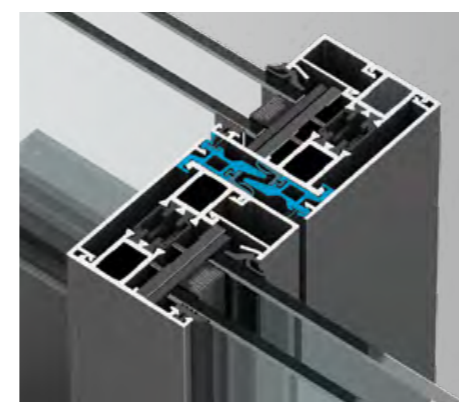
Max sash height / width	3 300 / 3 200 mm
Max infill unit thickness	42 mm
Max sash weight	420 kg

#### Comfort

Interlock options	50 mm, 100 mm
Water tightness	class E900 (900 Pa)
Air tightness	class 4 (600 Pa)
Wind load resistance	class C5 (2000 Pa)
Impact resistance	class 5
Acoustic performance	up to 36 dB
Burglar resistance	PAS 24 (class D)
Hardware options	Concealed hardware kit, Comfort Close, Gas Lift Handle

#### Energy

Thermal insulation	$U_d \geq 1.3 \text{ W/m}^2 \cdot \text{K}$
--------------------	---------------------------------------------



**Slim Interlock option (50 mm)**  
Special solution for thermal insulation and tightness



With a choice of handles our slimline sliding doors will perfectly suit your home

## COATING OPTIONS

High quality of powder and anodic coatings of ALUTECH products is confirmed by Qualicoat/Seaside and Qualanod international quality certificates.

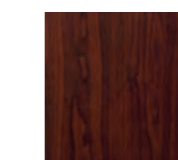


### POWDER COATING

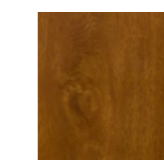
> 200 colours according to RAL colour chart;  
> 50 standard colours without extra surcharge including market leading RAL7038 matt.



### WOOD GRAIN EFFECT



Cherry



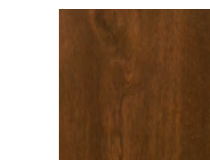
Golden oak



Irish oak



White ash



Walnut

### ANODIZING

3 types of surface treatment:

- Bead blasting;
- Brushing;
- Polishing.

9 anodized colour tones:

- Silver;
- Bronze (2 options);
- Black;
- Champagne;
- Cognac;
- Gold (3 options).

